

G145

CLASSROOM TECHNOLOGY



TURNING ON SYSTEM

2

**SHARE HDTV SCREENS WITH
LAPTOP/MAC**

3 - 4

PLAY CD/DVD

5

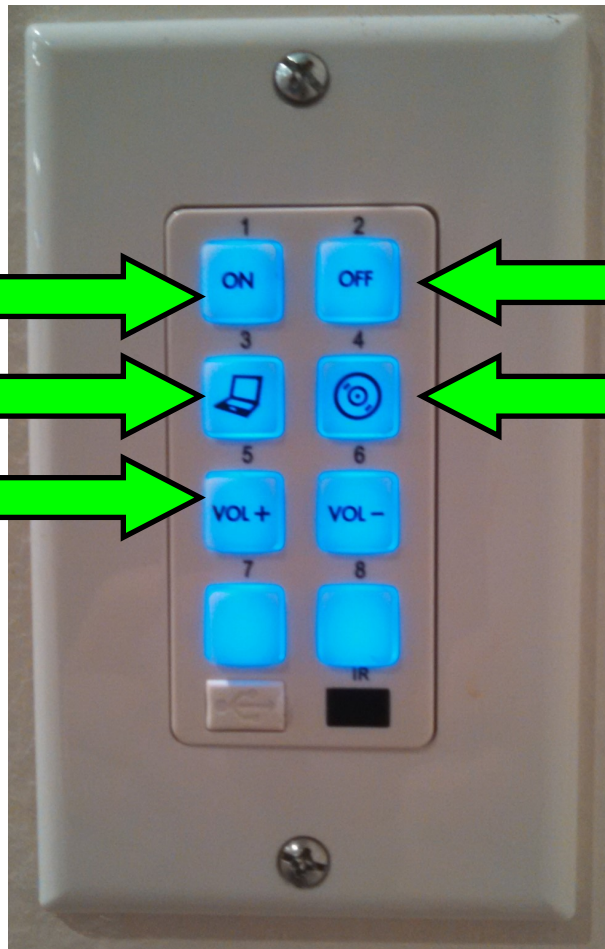
SHUTTING DOWN SYSTEM

6

CONTROL PANEL ON SIDE WALL



**CONTROL PANEL
BEHIND THIS WALL
FACING THE HDTV**



ON

OFF

PC/MAC WIRED

DVD PLAYER

MAIN VOLUME

SCREEN SHARE WITH LAPTOP/MAC

- AN ADAPTER MAY NEED TO BE USED BETWEEN YOUR DEVICE AND THE HDMI CORD THAT CONNECTS TO THE SCREENS (PORT IS IN THE FLOOR)
- ONCE DEVICE IS CONNECTED EITHER YOUR SCREEN WILL AUTOMATICALLY MIRROR ON THE HDTVs OR YOU WILL NEED TO ADJUST YOUR PC/MAC'S PROJECTION SETTINGS TO SET UP MIRRORING (EXTEND)

LAPTOP/MAC

<u>CONNECTION TYPE</u>	<u>ADAPTER TYPE</u>	<u>CORD TYPE</u>	<u>DETAILS</u>
			MAC DISPLAY PORT + DISPLAY PORT ADAPTER + LARGE HDMI CORD
			PC/MAC HDMI PORT + LARGE HDMI CORD
			PC MINI HDMI PORT + MINI HDMI CORD (BOTH ENDS HDMI 1 END SMALLER THAN THE OTHER)
			PC VGA PORT + VGA ADAPTER + LARGE HDMI CORD

SCREEN SHARE WITH LAPTOP/MAC (wired)

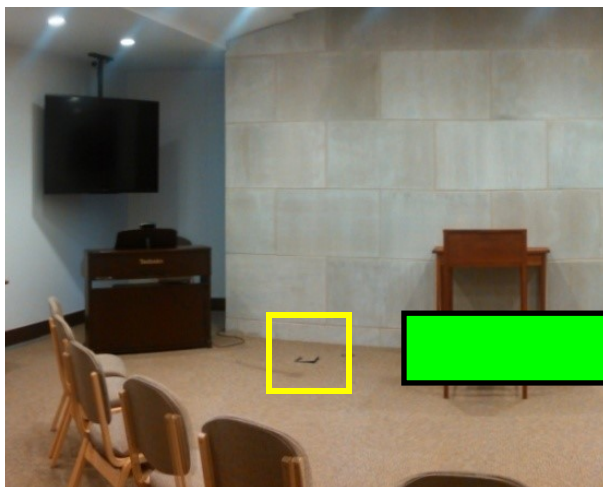
- ALL ADAPTERS AND CORDS ARE STORED IN THE SIDE CABINET OF G145
- THE WIRED HDMI CONNECTION TO THE SCREENS IS IN THE FLOOR NEAR THE FRONT-LEFT OF THE ROOM



G133 CABINET

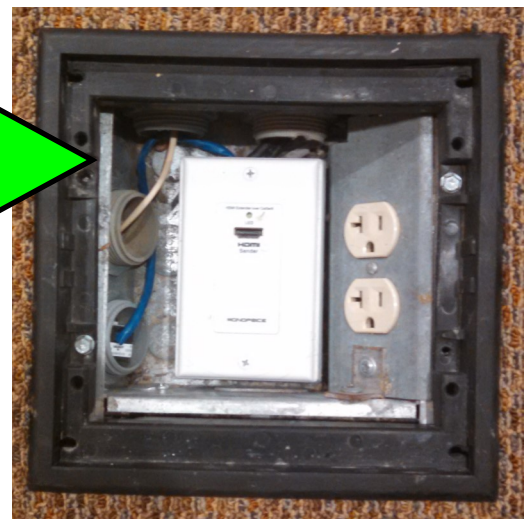


**RACK IN
G145 CABINET**



**LEFT-FRONT OF G145
HDMI PORT IN FLOOR**

**HDMI PORT TO CONNECT
TO SCREENS IN FLOOR
LEFT-FRONT OF THE ROOM**



PLAY A BLURAY, DVD, OR AUDIO CD

THE BLURAY (DVD) PLAYER IS LOCATED IN THE RACK OF THE CABINET

THE REMOTE IS IN THE CABINET AND CAN BE USED ANYWHERE IN THE ROOM



PRESS DISC ICON
ON FRONT
CONTROL PANEL
TO CONNECT SCREENS
TO BLURAY PLAYER

LG BLURAY/DVD PLAYER



BLURAY PLAYER REMOTE
IS IN CABINET

SHUTDOWN SYSTEM



**"OFF"
SHUTS DOWN
EVERYTHING
IN THE ROOM**